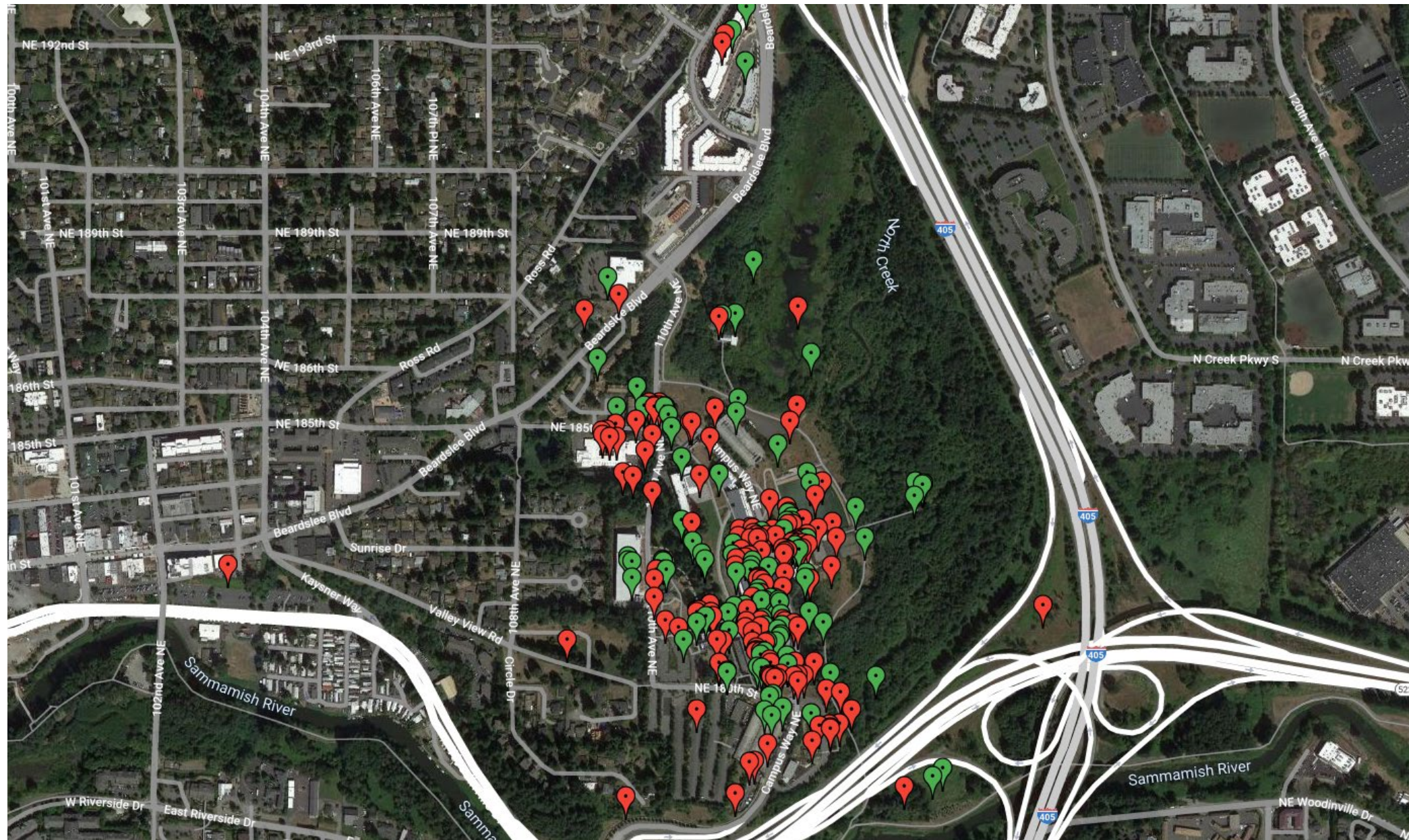


Red Dot / Green Dot Summary



Respondents were given the following prompt:

Please share your thoughts on specific indoor or outdoor locations on the UW Bothell Campus and surroundings. Add a marker to the map by selecting a green pin to highlight a place that you like or select a red pin to indicate a place that could be improved. Please label your pins and add a comment to explain why you've placed the marker.



268 unique entries collected before June 14th were analyzed in the pages below.

Perceptions of the Campus - Campus Perimeter

Positive perceptions dominate the campus perimeter, with exceptions at Husky Hall and the Sports Fields

Husky Village

- Convenient access to nearby bus station
- Excitement for new housing and food service options

Parking Garages

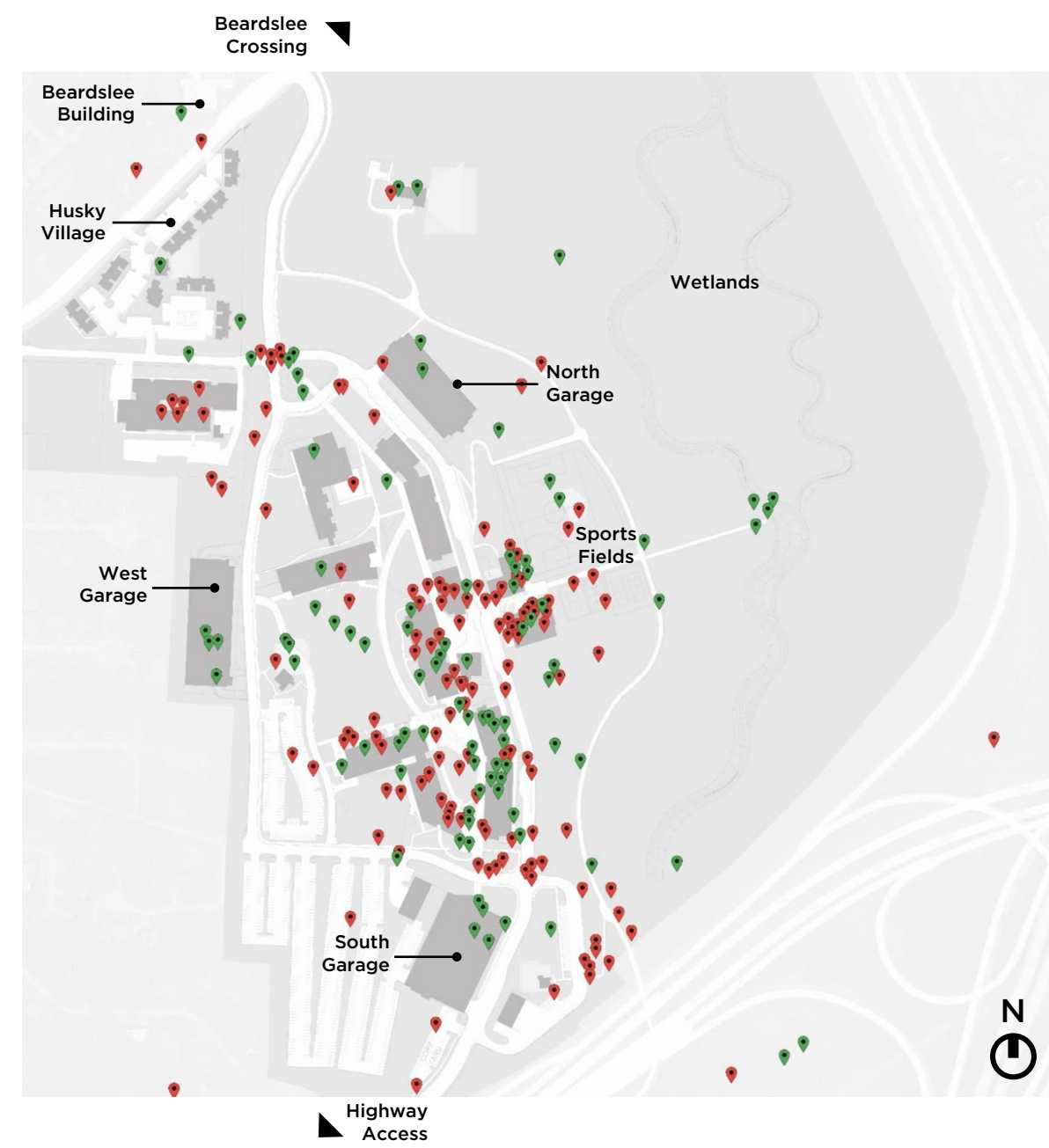
- Satisfactory parking capacity
- Solar panels promote sustainability
- Many EV charging stations
- Desire for less parking lots and more greenspaces

Wetlands

- Beautiful protected resource, easy access to nature
- Convenient bike trail that connects to BRT station
- Simonds Conservatory an enjoyable instruction and research space. Being secluded, it can seem back of house.
- Trail could use better lighting and signage

Truly House (4g ; 2r)

- Offers a great historical site to university members
- The adjacent green garden is valued and has potential for a vegetable garden
- Could use more signage to facilitate wayfinding



Beardslee Crossing

- Convenient access to nearby bus station
- Easy parking and access to Human Resources
- Good open workstations and meeting space
- Lacking enclosed private offices for faculty and staff
- Nearby coffeeshop with food options
- Located on the campus periphery and perceived as far by many members

Beardslee Building

- Near a hazardous intersection with little visibility
- Hopeful for future expansion of Bothell
- Consider use for faculty offices with a greenspace

Husky Hall

- Outdated and poorly maintained building
- Contains many poorly utilized spaces
- Located on the perimeter of campus, not easily accessed

Sports Fields

- Bird droppings cause unsanitary conditions
- Basketball court is poorly maintained
- Fields underutilized. Make more use of them, including renting to the community
- Prioritize DEI spaces over sports fields.

Perceptions of the Campus – Key Campus Buildings

The heart of campus and UW2 drew significant critique. UW1, Discovery Hall and NCEC elicited positive feedback.

UW1

- Offers fun and safe spaces for students to gather and celebrate diversity
- Has great study spaces on the 3rd floor
- Provides good class and lab spaces
- Counseling spaces need more privacy
- Bike lockers promote sustainable commuting

Discovery Hall, STEM

- Entryways and bike parking are uncovered and susceptible to rain
- Offer great instruction and research spaces/labs
- Collaboratory space is great
- Makerspace is great
- The 352 kitchen is a great support space for faculty and staff to eat in and socialize
- Excited for new STEM building and spaces; hopeful for outdoor covered spaces
- Provide rain cover for bike parking

UW2

- Has many underutilized offices
- opportunity to convert space into a cafeteria
- Could use a coffeeshop
- Shower resources are often closed unexpectedly
- Has great open spaces
- Bike parking is valued but needs rain cover



Library, LB2, and Annex

- Subway location: provide more food options
- Bookstore alternative suggestions: central faculty lounge, relocate HaWRC here, maintain a café here
- Library (LB1): consolidate advising and tutoring in Library; insufficient student study spaces; relocate IT department to free up study space; relocate books to make more room for people
- LBA reading room, quiet rooms, meeting rooms, study carrels are liked
- Add indoor eating and tables outside (in back)
- Inaccessible exits

ARC

- Outdoor food truck space needs seating
- Music on 2nd floor distracts from quiet study
- HaWRC needs more space to serve students
- ARC gym needs better equipment
- Building needs functioning A/C
- Need more private spaces in office areas
- Has good space for socializing,
- Not all know of resources there

NCEC

- Great resource for students, staff and faculty; is poorly utilized due to rules governing its use
- Would make a great cafeteria space, quiet study space, events, group gatherings
- Has underutilized kitchen and outdoor space
- The pedestrian bridge to NCEC requires repair

Perceptions of the Campus – Campus Circulation & Outdoor Public Space

The Collaboratory Plaza, Lawns and Upper Campus “Forest” are well liked. Campus Way poses multiple problems, and elements of the Promenade can be improved upon.

Promenade

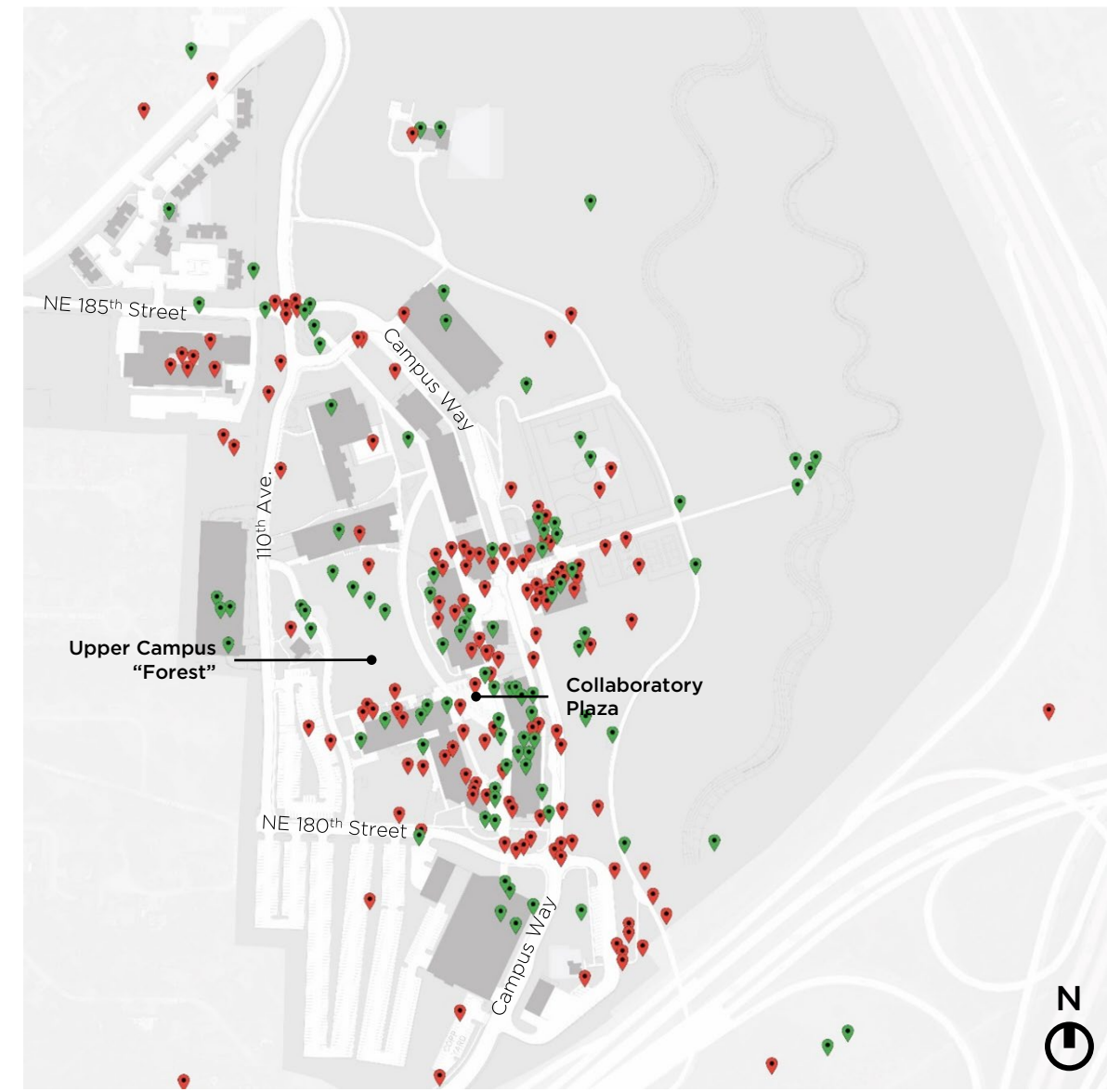
- The bronze ‘W’ is dirty but offers a valued sense of entry into the campus
- South campus entry needs an interactive map to help orient visitors
- Provide more protection from the rain (general comment throughout campus)

Collaboratory Plaza & Lawns

- Well-liked outdoor open plaza, used as intended; art may be limiting
- Consider bringing food trucks to plaza
- More formal shelter than tents desired
- Lawn south of plaza is appreciated and could be enhanced for more outdoor space uses
- Consider rotating schedule mowing to promote more wildlife / pollinators (comment on Cascadia lawn)

Upper Campus “Forest”

- Space is appreciated, preserve trees
- Supplement with picnic areas



Campus Way

- Multiple intersections present frustrations around pedestrian safety, and traffic congestion
- Opportunity to add a bike lane
- Desire for more temporary parking and better signage including the University’s ‘W’ at the main access points
- Concerns around ADA access to sidewalk

NE 185th & 110th Ave Intersection

- Gold ‘W’ gives a nice sense of identity
- Traffic signal often malfunctions
- Blocked road provides pedestrian safety but limits vehicular access

NE 180th & Campus Way Intersection

- Nearby area used for drop off which causes traffic and pedestrian safety issues
- Opportunity to add a bike lane to help navigate traffic
- Consider replacing stop signs with a traffic signal

Themes

The following top themes emerged:



Circle diameter is proportional to the number of map entries associated with the theme

Space for Community to Come Together

- Great spaces for gathering, socializing, and events

Commuter Needs

- More bike lanes
- Safer intersections
- Better drop off locations

Spaces for Relaxation

- Peaceful outdoor spaces
- Preserve outdoor greenery

Food Options

- More options + cafeteria
- Healthier options

Cleanliness

- Husky Hall is smelly
- Lots of bird poop on campus

Conference / Meeting Spaces

- More places for to hold meetings (for student orgs, faculty / staff)
- More space allocation for Diversity Center, OTP

Needs Renovation / Update

- Husky Hall is run down
- ARC needs AC

Office Space Allocation

- Need private offices
- Many unoccupied offices

Parking

- More temporary parking spots
- Great EV Charging

Pedestrian Needs

- Safer walking paths
- Safer intersections
- Fix the bridge

Physical Accessibility

- Improve wheelchair accessibility

Places to Sit and Eat

- Have tables where the food trucks are

Private Study Rooms

- Spaces for taking online classes
- Spaces for students to study alone with no distraction

Scheduling

- Increase hours for students to study on campus
- Allow for more use of the NCEC

School Location

- Campus doesn't feel connected

Spaces for Exercise / Sports

- Revitalize outdoor fields
- Good gym, add more equipment

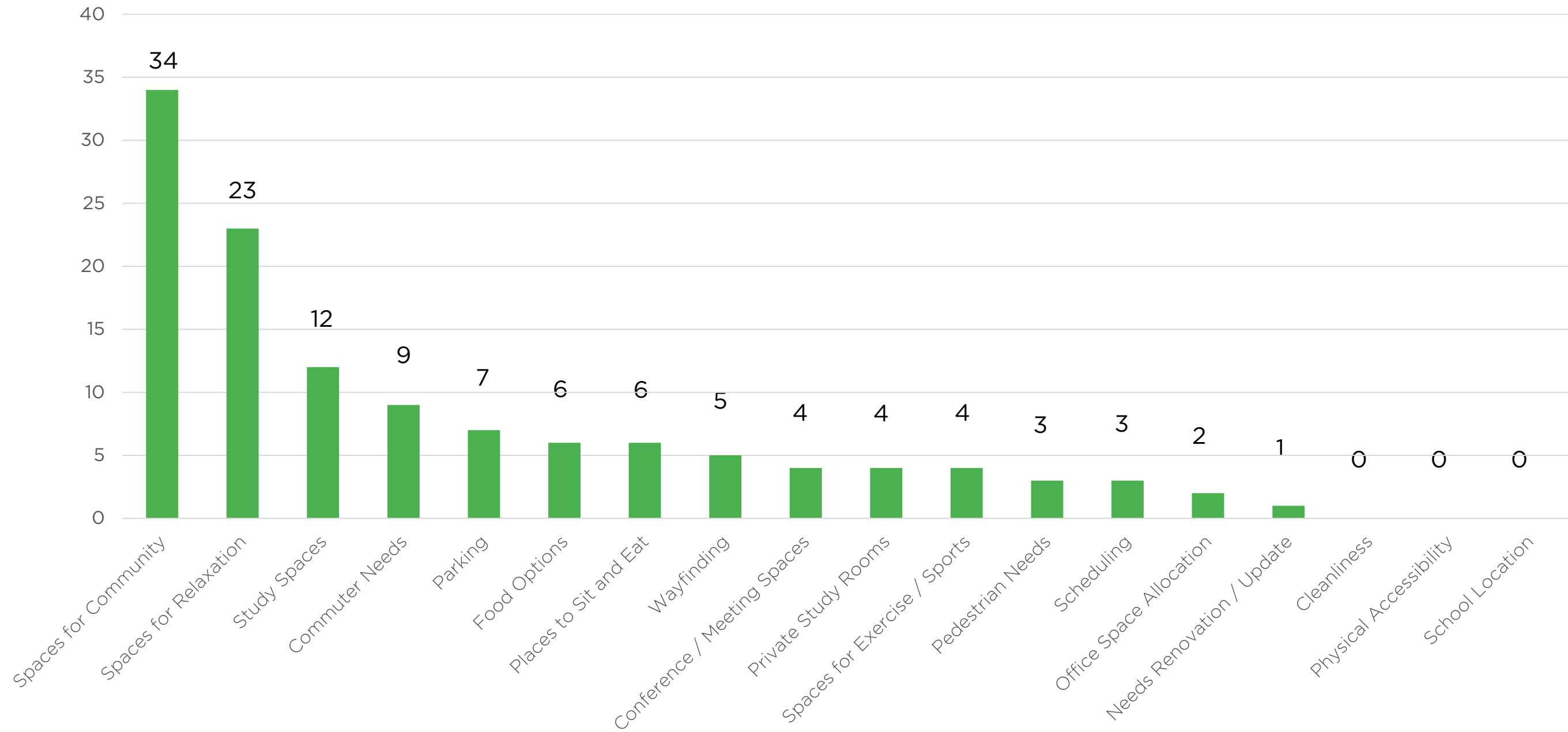
Study Spaces

- Library has good study spaces
- Add more general study areas outdoors

Wayfinding

- More signage directing to buildings / bus stops

Positive Sentiment by Theme



Negative Sentiment by Theme

