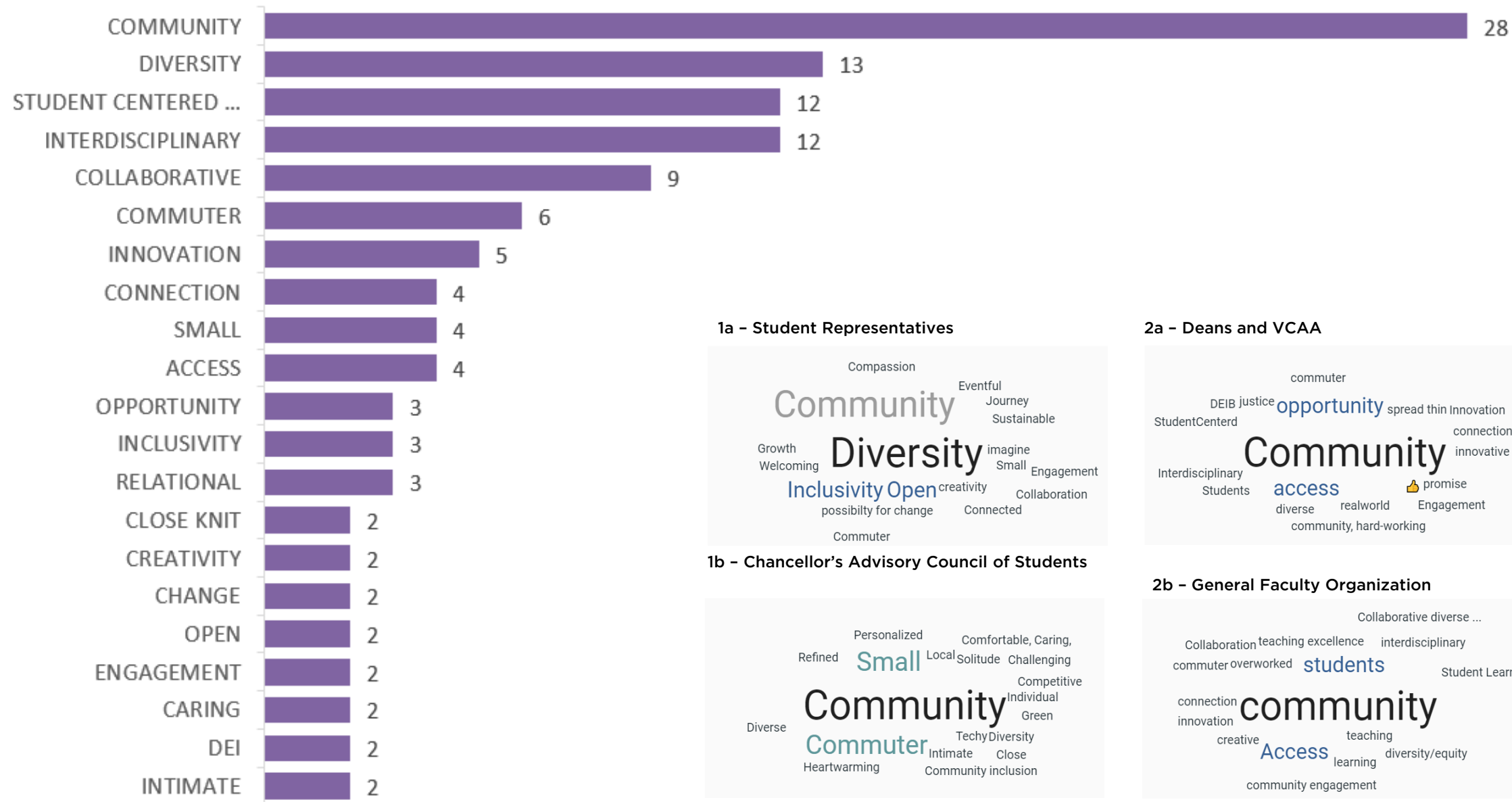


# Qualitative Interviews

## CAPTURING THE ESSENCE OF UW BOTHELL



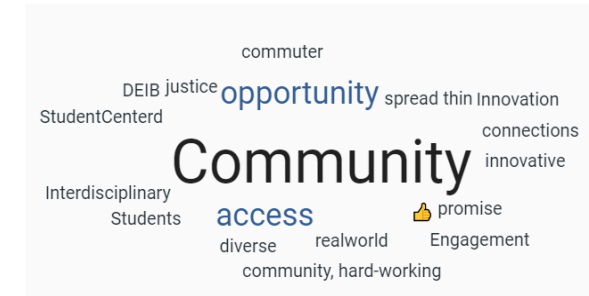
1a - Student Representatives



1b - Chancellor's Advisory Council of Students



2a - Deans and VCAA



2b - General Faculty Organization



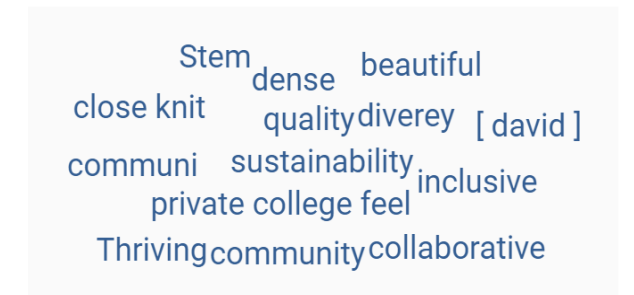
3 - Enrollment Management & Student Affairs



4 - Planning, Advancement, Institut. Research, IT



5 - Facilities and Campus Ops



# Qualitative Interviews

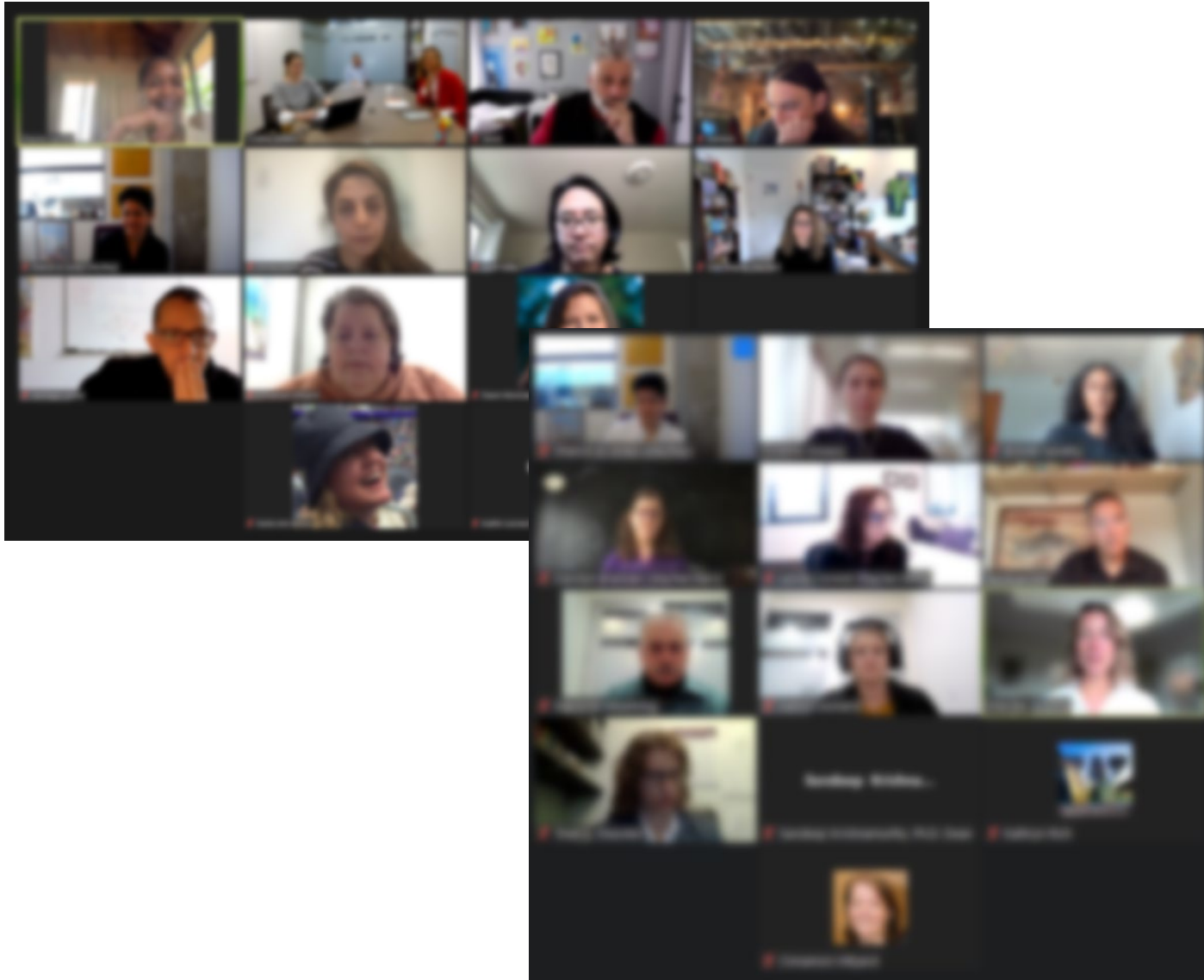
## STUDENT PRIORITIES



- Celebrate diversity and identity
- Enhance the intimate sense of community across campus:
  - More food and social activities
  - Affordable parking options
  - Concentrate intentional social and collaborative spaces at campus core
  - Spatial clarity of buildings and places
- Balance and unify the experience of residential and commuter students
- Provide Health & Wellness Services on-campus
- Create more 'Third Spaces' - flexible spaces for group study and/or on-line class participation
- Celebrate departments/schools equally
- Upgrade technology

# Qualitative Interviews

## FACULTY & LIBRARY PRIORITIES



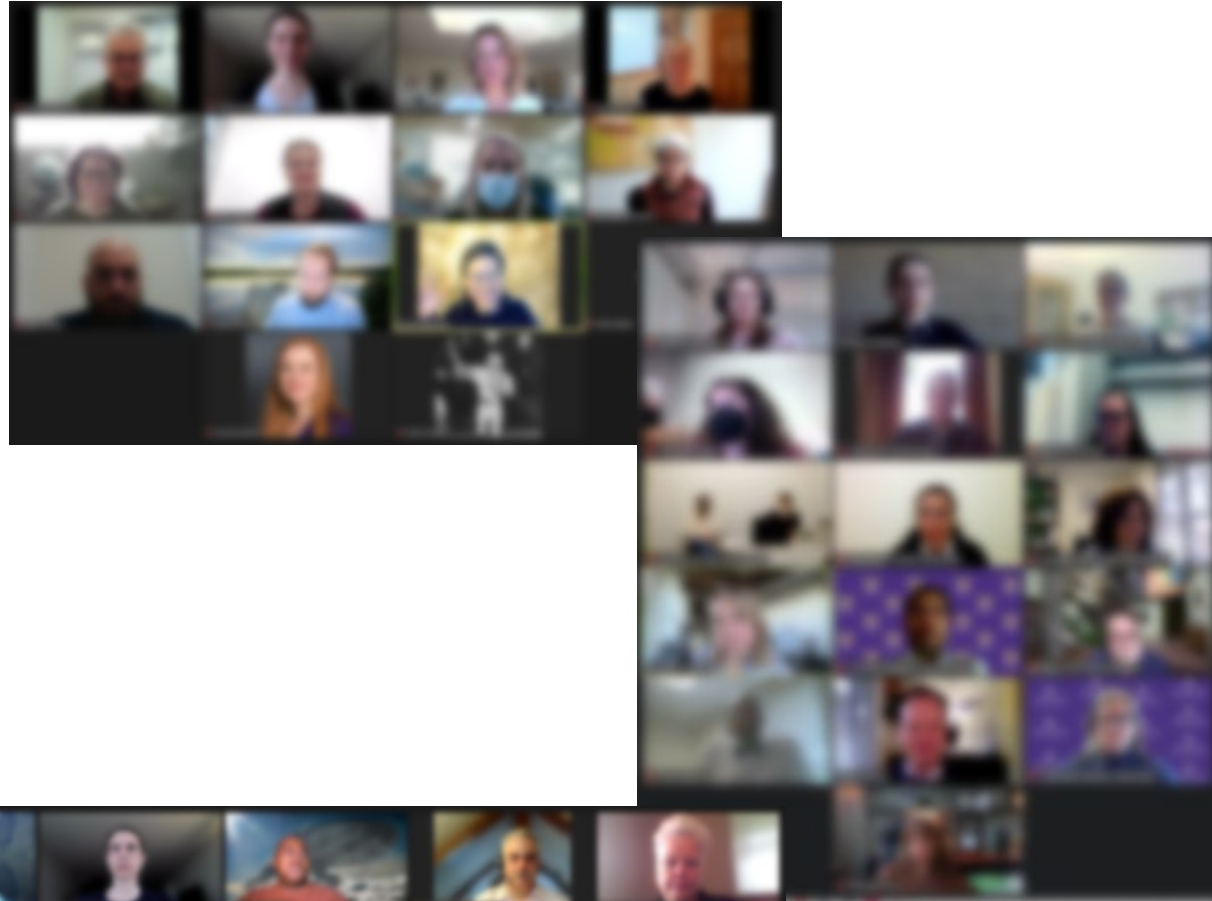
- **Upgrade technology** for basic and “hybrid” teaching modalities
- **Maximize flexibility** of learning environments
- Create more **‘Third Spaces’** - flexible spaces for group study and/or on-line class participation
- **‘Democratize’ faculty and staff office policy** to alleviate stresses for all faculty regardless of track
- Make warm, welcoming spaces available for all faculty to meet with students
- **Balance desire for stronger departmental identity with support for x-dept. collaboration**
- Provide reasons for faculty to dwell on campus:
  - Central **food and gathering** options, open late;
  - **Affordable parking**
  - Easy access to **faculty collaboration space**
- Provide **Health & Wellness Services**

**THINK**

CONFIDENTIAL AND PROPRIETARY

# Qualitative Interviews

## STAFF PRIORITIES



- **Celebrate intimate, warm, accessible community UWB culture** while maturing beyond ‘start-up’ phase
- **Create more ‘there there’ on campus** with food, gathering and social activities day and evening
- **Consolidate more office space on-campus** to elevate the staff experience, foster collaboration
- **Democratize staff and faculty office space** according to on-campus utilization
- **Provide predictable, easy access to flexible, private meeting space** on-campus within a hybrid work policy
- Alleviate the issue of **parking as a daily concern**
- **Find more space through effective scheduling of offices and classrooms**
- Provide more **flexible, multi-use spaces**
- **Collaborate with Cascadia College** to identify additional space sharing opportunities

# Key Themes

*Informed by stakeholder engagement, and connected to the University's Strategic Plan*

